

# New 2-Story Home Move-in Ready Spring 2020

**\$324,900**



**Beds: 4**

**Baths: 2.5**

**Sq Ft: 2,073**

**Lot Size: 2.38 acres**

- Granite Counters

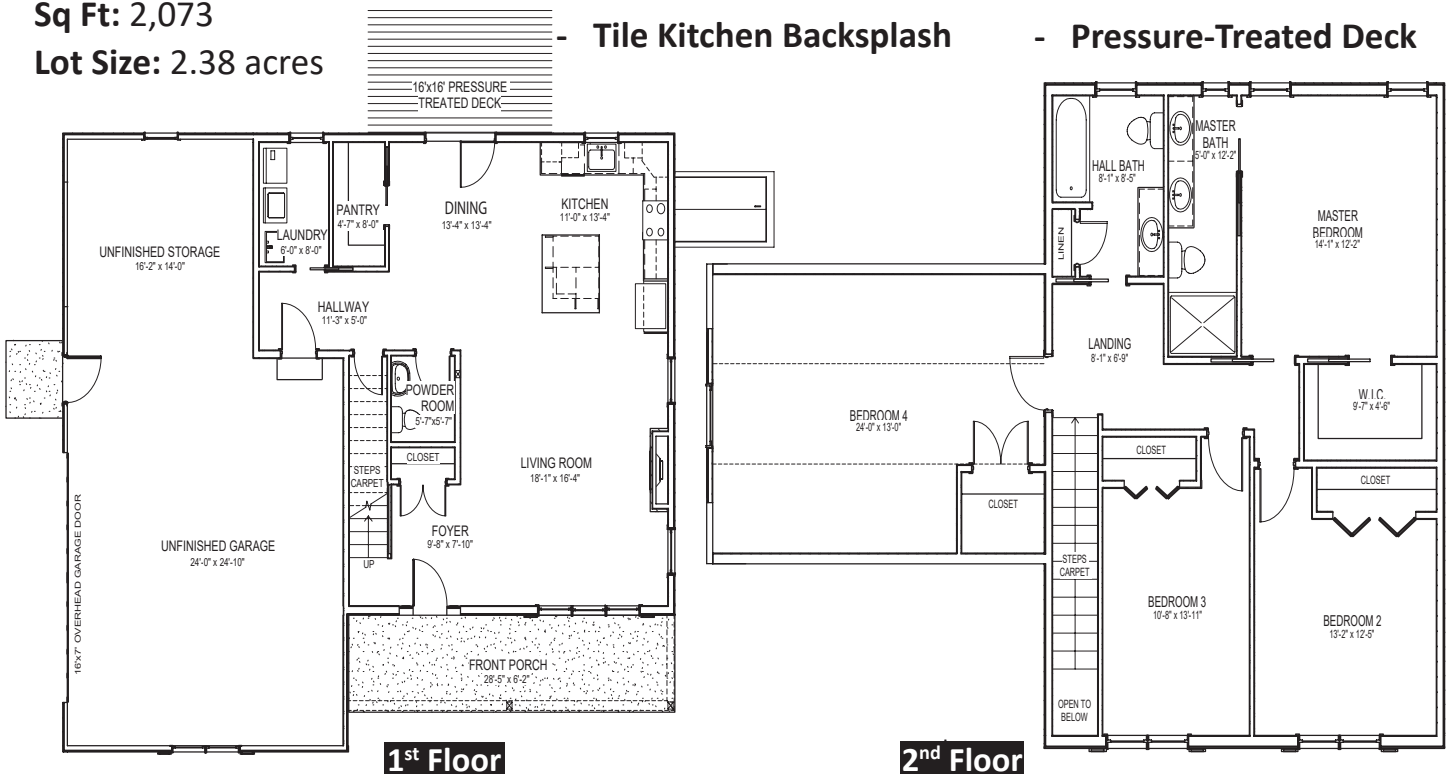
- Stone Fireplace

- Tile Kitchen Backsplash

- Vinyl Plank 1<sup>st</sup> Floor

- Carpet 2<sup>nd</sup> Floor

- Pressure-Treated Deck



*Building Peace of Mind*

8396 Spring Road  
 New Bloomfield, PA 17068  
 Phone: 717-582-3423  
 E-mail: info@wslincorporated.com

Showroom/Office Hours:  
 Monday-Friday 8AM-4:30PM,  
 Saturdays and Evenings by Appointment  
 HIC# PA011481 | [www.wslincorporated.com](http://www.wslincorporated.com)

