

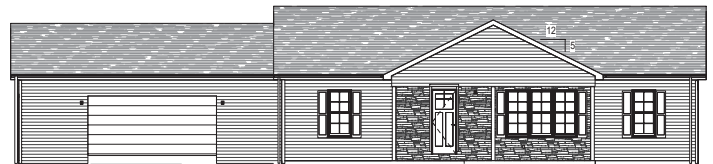
New Ranch Home Move-in Ready End of August



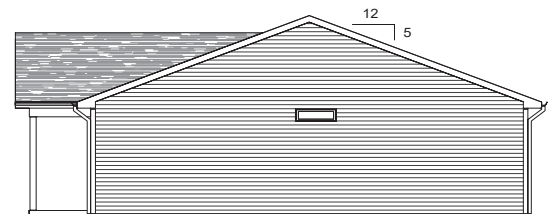
1-story home with attached 2-car garage – 3 bedrooms – 2 baths – vaulted ceiling – propane fireplace

Don't miss out on this brand new ranch home for sale in Landisburg, PA.

1,683+/- SF NEW 1-STORY TRADITIONAL STYLE, OPEN FLOOR PLAN, VAULTED CEILING HOME, designed and built by WSL Incorporated, will be move-in ready end of August! This brand-new 3-bed, 2-bath home offers one level living with an open floor plan, vaulted ceiling, propane fireplace finished in stone with a barn beam mantel and sits on a beautiful 1.75 acre wood lot. The traditional style exterior with a covered porch and craftsman style front door surrounded by stone is very inviting. And the rear deck offers a great place to enjoy the beautiful views surrounding the home. Let this beautiful house welcome you home each day.



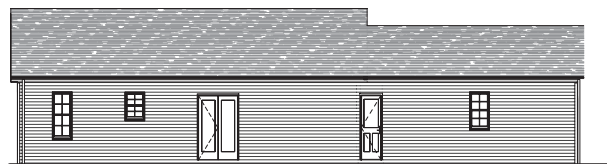
Front Elevation



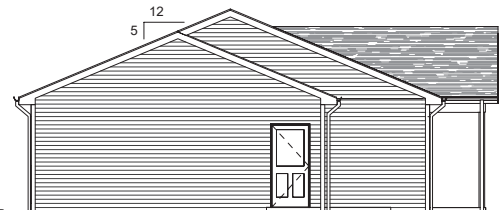
Left Elevation

Contact Chris Deardorff, of Iron Valley Real Estate, at 717-991-8405, today to schedule a visit to this brand new home in Landisburg, PA .

Beds: 3
Baths: 2
Home Size: 1,683 sq. ft.
Lot Size: 1.75 acres



Rear Elevation



Right Elevation



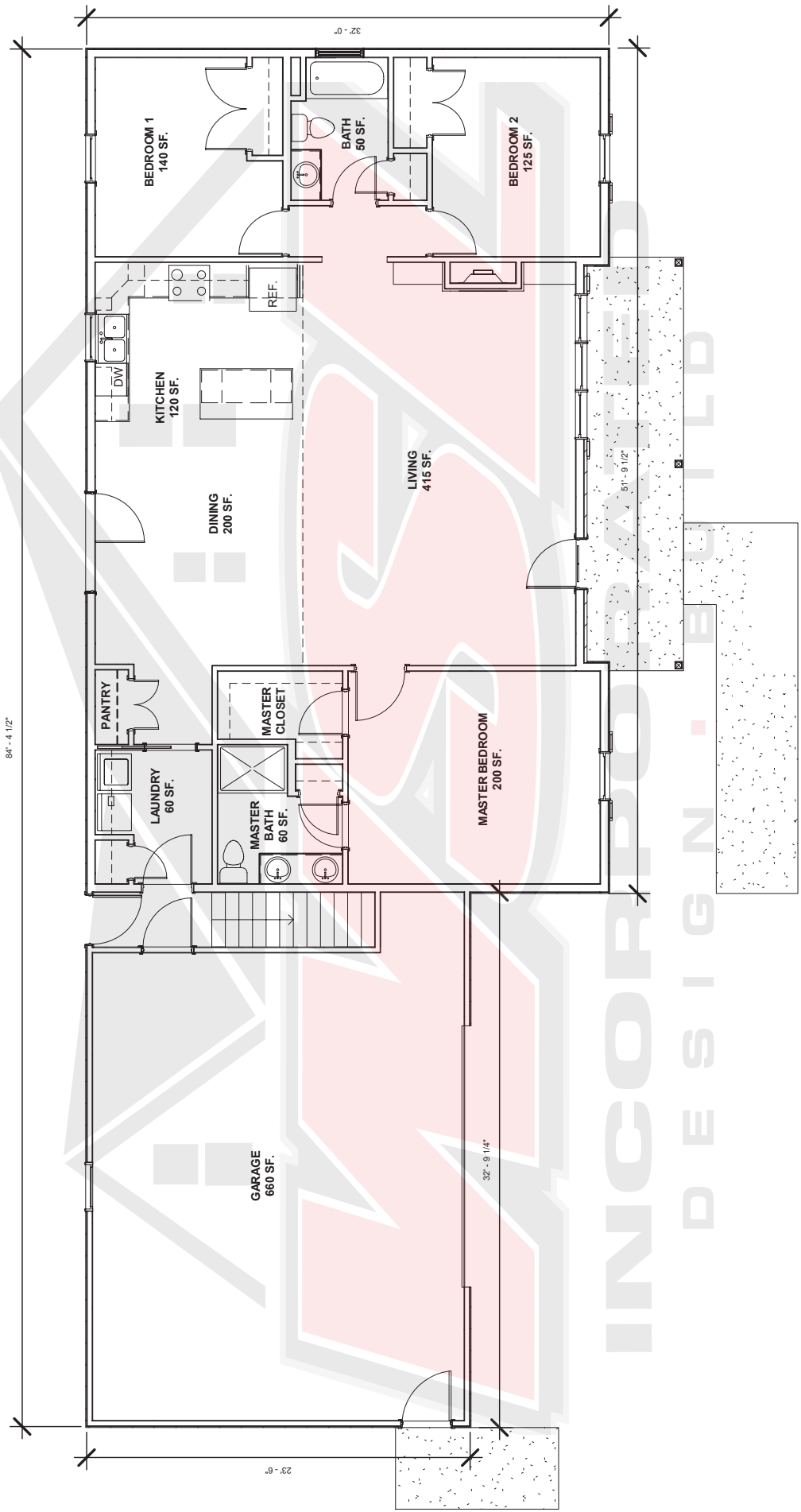
Building Peace of Mind

8396 Spring Road
New Bloomfield, PA 17068
Phone: 717-582-3423
E-mail: info@wslincorporated.com

Showroom/Office Hours:
Monday-Friday 8AM-4:30PM,
Saturdays and Evenings by Appointment
HIC# PA011481 | www.wslincorporated.com



First Floor - 1,683 sq. ft.
Garage - 660 sq. ft.



Building Peace of Mind

All information, renderings, floorplans, and house designs shown are produced exclusively by and for WSL Incorporated; are the sole property of WSL Incorporated; and protected by Federal Copyright Laws. They can not be copied, reproduced, or used in any manner without the express written consent of WSL Incorporated. © 2019