

NEW 4-BEDROOM HOME FOR SALE



2-story home with attached 2-car garage | 4 bedrooms | 2.5 baths | granite counters & subway tile backsplash | gas fireplace

There is a beautiful new WSL Inc. home now available for sale in Shermans Dale.

Don't wait contact WSL Inc. today at 717-582-3423, or via email wlesher@wslincorporated.com.

This 1,836+/-sf, 4-bed, 2.5 bath home sits on a 1.7 acre lot and will be move-in ready the end of November. This home features an open floor plan, granite counters, maple kitchen cabinets, a subway tile ceramic backsplash, a propane fireplace framed in ledgerstone and shiplap to the ceiling, and an attached 2-car garage. Don't wait contact us today!

This home is less than 30 minutes to Carlisle, Mechanicsburg and Harrisburg. **WE ARE PAYING BUYER'S AGENTS 3%.** Don't wait, get in on this incredible deal now! Contact WSL Inc. today!

- **Beds:** 4
- **Baths:** 2.5
- **Home Size:** 1,836+/-sf
- **Lot Size:** 1.7 acres



Front Elevation



Left Elevation



Right Elevation



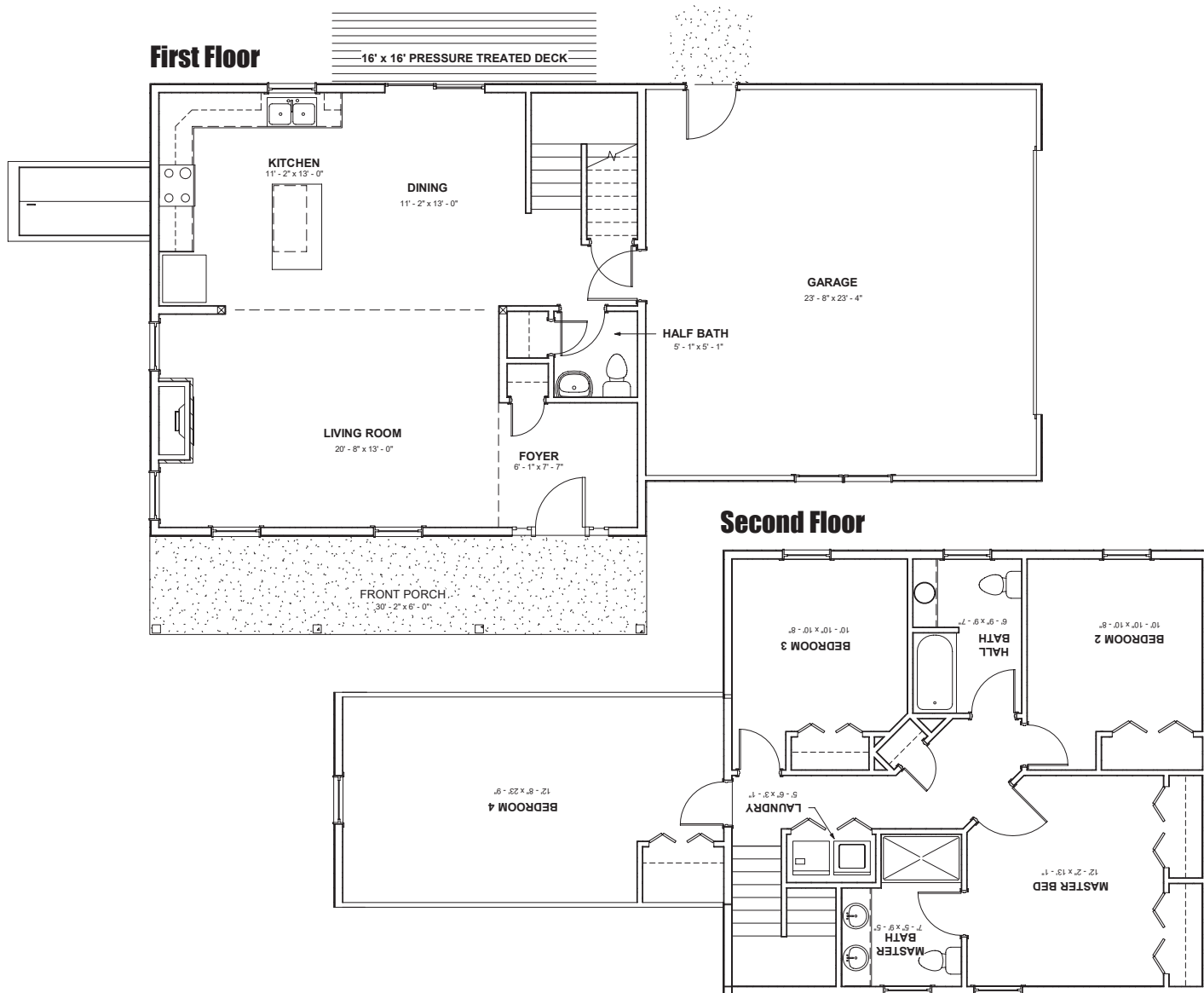
Rear Elevation



Building Peace of Mind

8396 Spring Road
New Bloomfield, PA 17068
Phone: 717-582-3423
E-mail: info@wslincorporated.com

Showroom/Office Hours:
Monday-Friday 8AM-4:30PM,
Saturdays and Evenings by Appointment
www.wslincorporated.com



All of our WSL Incorporated homes include “bonus features”, which are typically charged as upgrades by competitors, but are included as a standard in a WSL Incorporated home.

- Watchdog Waterproofing on foundation walls – a water proofing that prevents both soil moisture and liquid from infiltrating (most competitors utilize damp proofing which only addresses soil moisture)
- Upgraded Insulation Package (most competitors use batt insulation):
 - o R-7 Spray Insulation plus R-13 Kraft wall insulation
 - o R-30 floor insulation
 - o R-49 ceiling insulation – blown cellulose
 - o Super seal foam and caulk package (this increases the energy efficiency of the home by sealing at all of the sill plates, windows and doors)
- 6+/-in window sills (most competitors picture frame the windows)
- Recessed dryer vent, which allows the dryer to be pushed closer against the wall
- ManaBlock plumbing system, which maintains consistent water pressure and temperature if two different faucets are turned on at the same time and you can easily turn off the cold/hot water for a specific plumbing fixture
- 14-15 SEER High Efficiency Heat Pump w/ A/C (most competitors utilize a 13 SEER)
- 2 Year Builders Warranty



Building Peace of Mind

All information, renderings, floorplans, and house designs shown are produced exclusively by and for WSL Inc.; are the sole property of WSL Inc.; and protected by Federal Copyright Laws. They can not be copied, reproduced, or used in any manner without the express written consent of WSL Inc.